



**SIDWELL FRIENDS
 SCHOOL**
 BETHESDA, MARYLAND
 WASHINGTON, DC

**MIDDLE
 SCHOOL**

KTA PROJECT NO. 694

BUILDING ELEVATIONS

SCALE: 1/8"=1'-0"
 DRAWN BY: MB/JG/RK
 CHECKED BY: SR
 CAD FILE:
 DATE: 01 JUNE 2007

REVISIONS	DATE	DESCRIPTION
1	13 APR 05	ADD#6
2	07 SEP 05	RFP#7
3	07 SEP 05	AS#2
4	14 SEP 05	RFP#8 REVISION
5	05 OCT 05	ISSUED FOR CONSTRUCTION

A4.2
 RECORD SET

GENERAL NOTES:

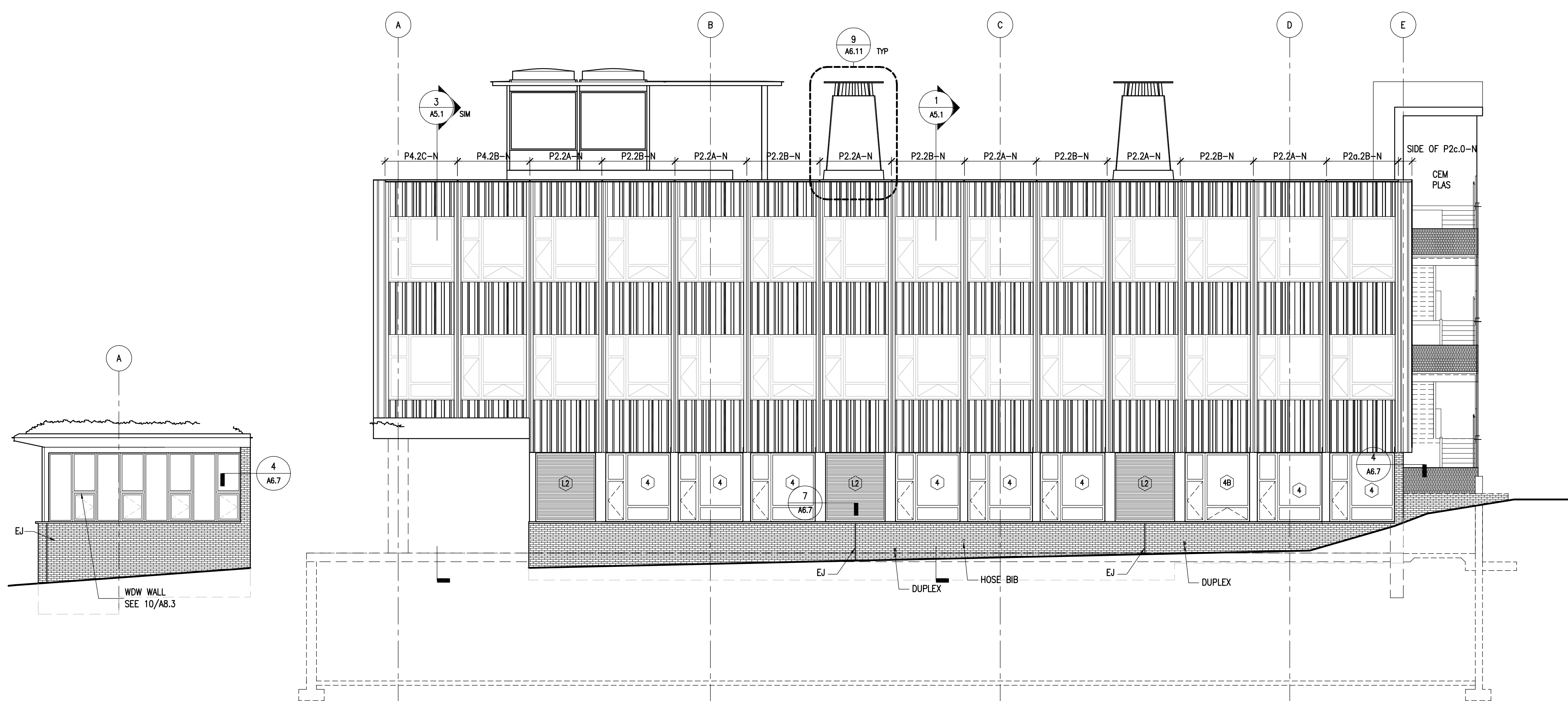
- REMOVE ALL CONDUITS, WIRES, HARDWARE (INCLUDING INSERTS), AND HP FROM ALL ELEVATIONS. REPAIR ALL DAMAGE CAUSED BY REMOVAL.
- CLEAN EXISTING LIMESTONE W/O SURROUNDS, HEADS, JAMBS, AND SILLS PER SPECIFICATIONS.
- ALIGN NEW BRK COURSING WITH EXG BRK. VERIFY NEW SHELF & SILL LOCATIONS TO ACCOMMODATE COURSING.
- SEE AS.5 & AS.6 FOR PNL DRAWINGS.
- THE ELEVATIONS ARE INTENDED TO ALIGN W/ EXISTING FLR ELEVATIONS. VERIFY ALL FLR HEIGHTS.
- REFER TO AB.2 FOR WINDOW AND LOUVER TYPES

BRICK WORK:

- INFILL EXISTING WALL OPENING WITH SALVAGED BRK
- REUSE SALVAGED BRICK AT NEW EXTERIOR WALL
- REFURBISH EXG W/O SEE SPECIFICATIONS FOR SCOPE
- INFILL EXG OPENING W/ NEW BRK

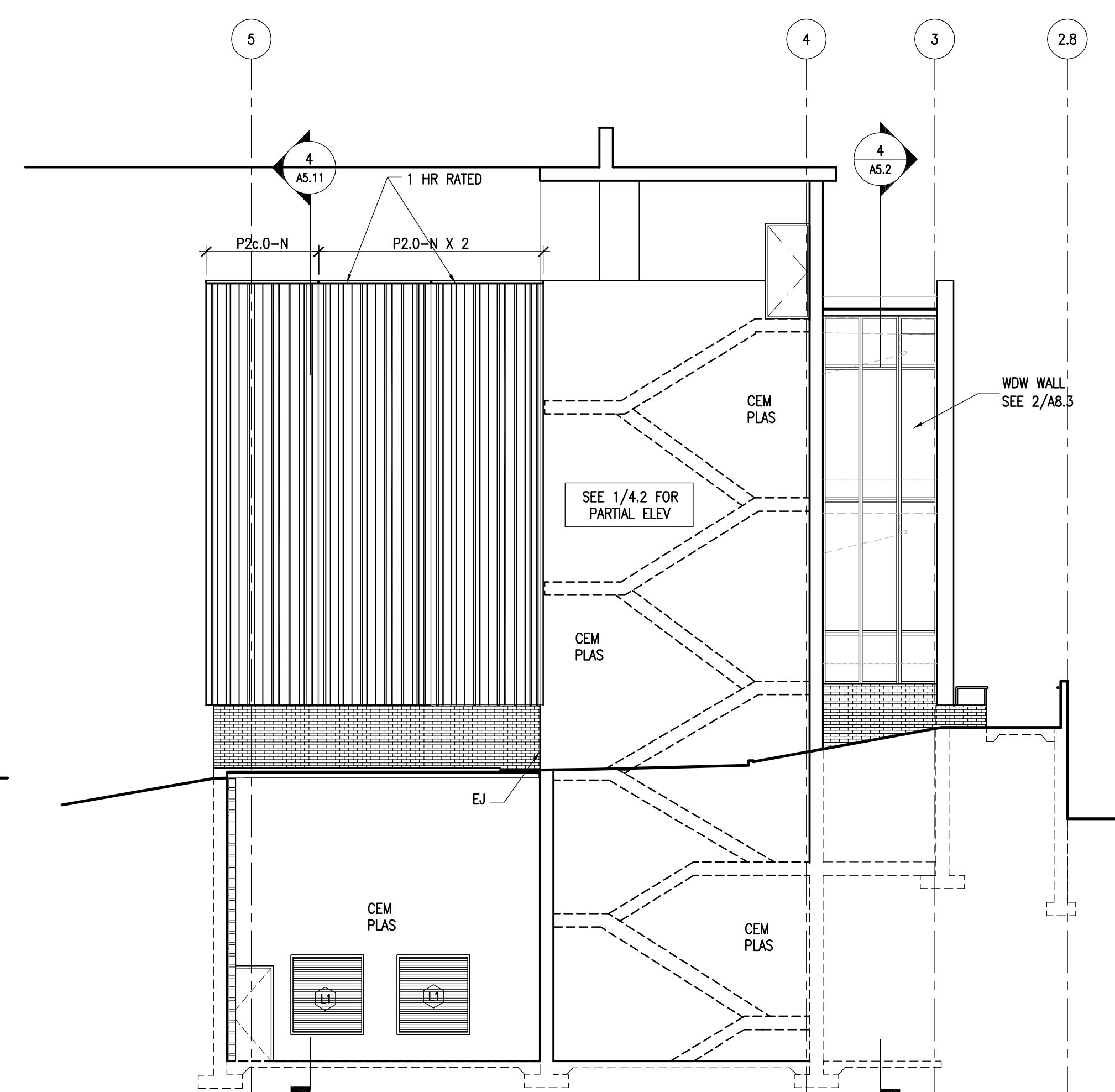
WINDOWS:

- REFURBISH EXISTING WINDOW. SEE SPEC FOR SCOPE OF WORK.
- REGRAZE W/ TRANS GL.

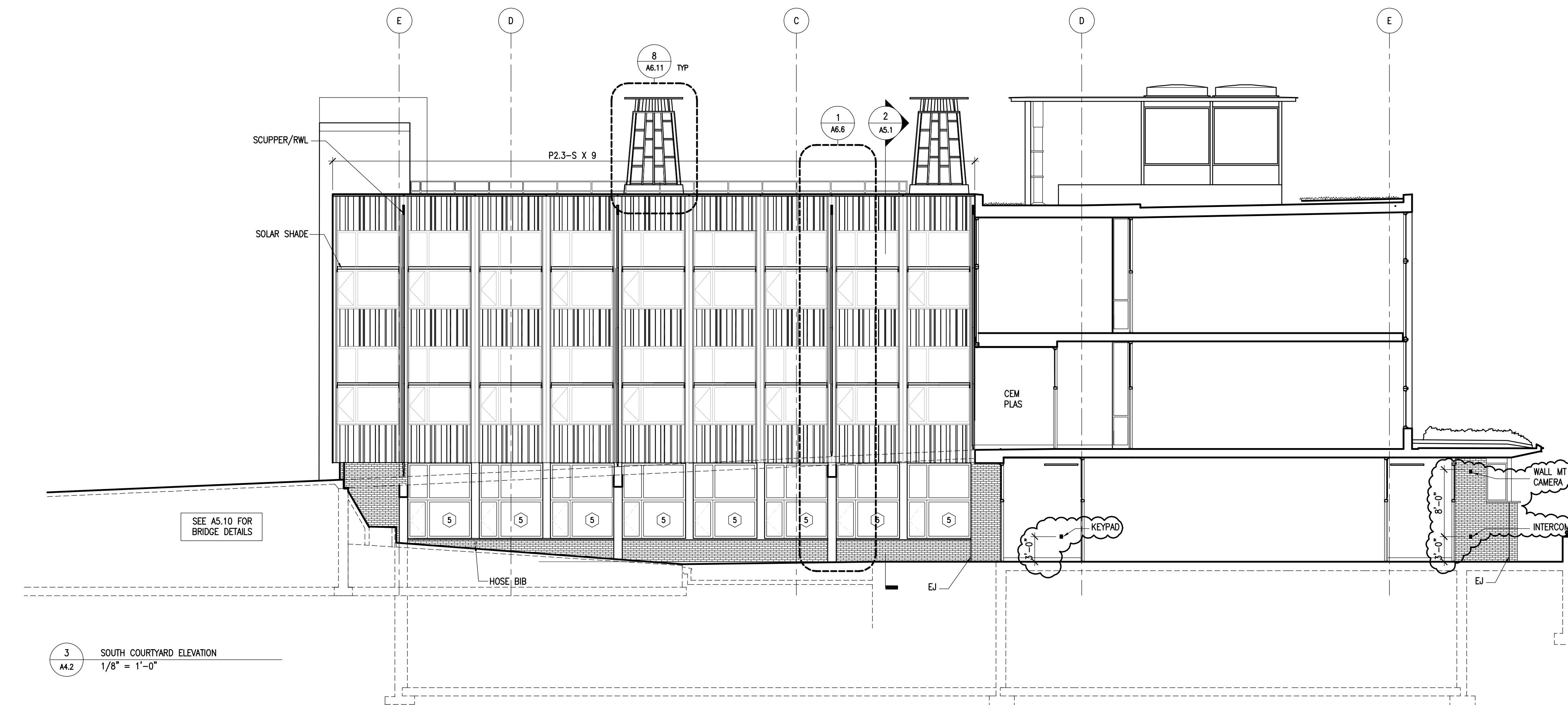


6 PARTIAL NORTH LIBRARY ELEVATION
 A4.2 1/8" = 1'-0"

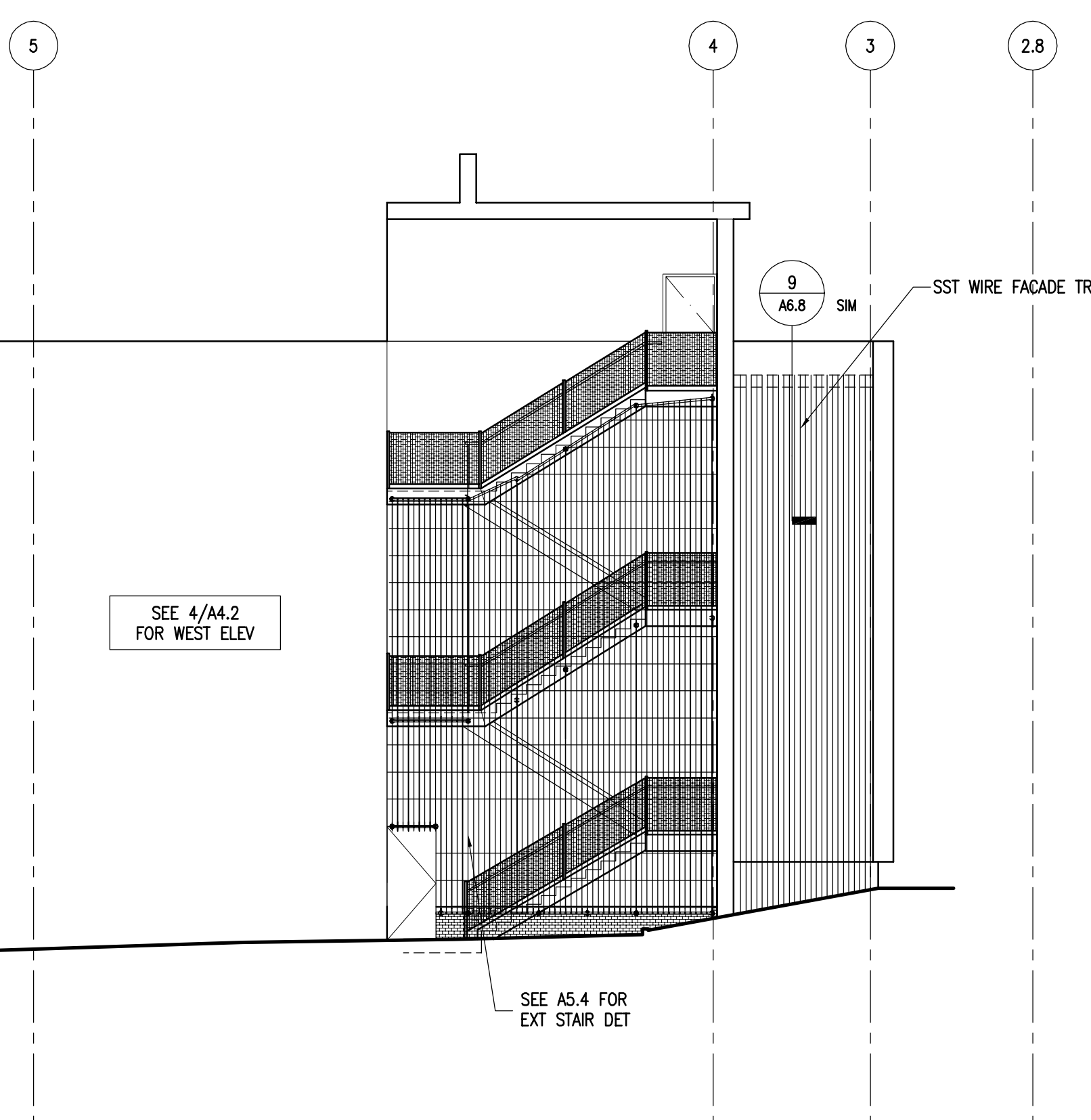
5 NORTH ELEVATION
 A4.2 1/8" = 1'-0"



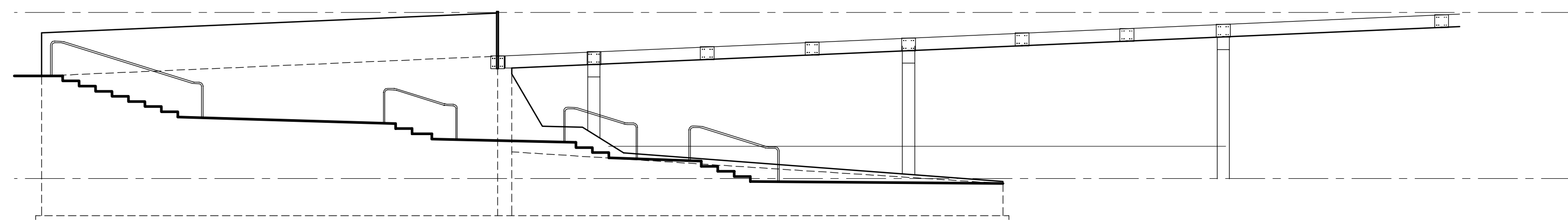
4 WEST EXTERIOR STAIR ELEVATION
 A4.2 1/8" = 1'-0"



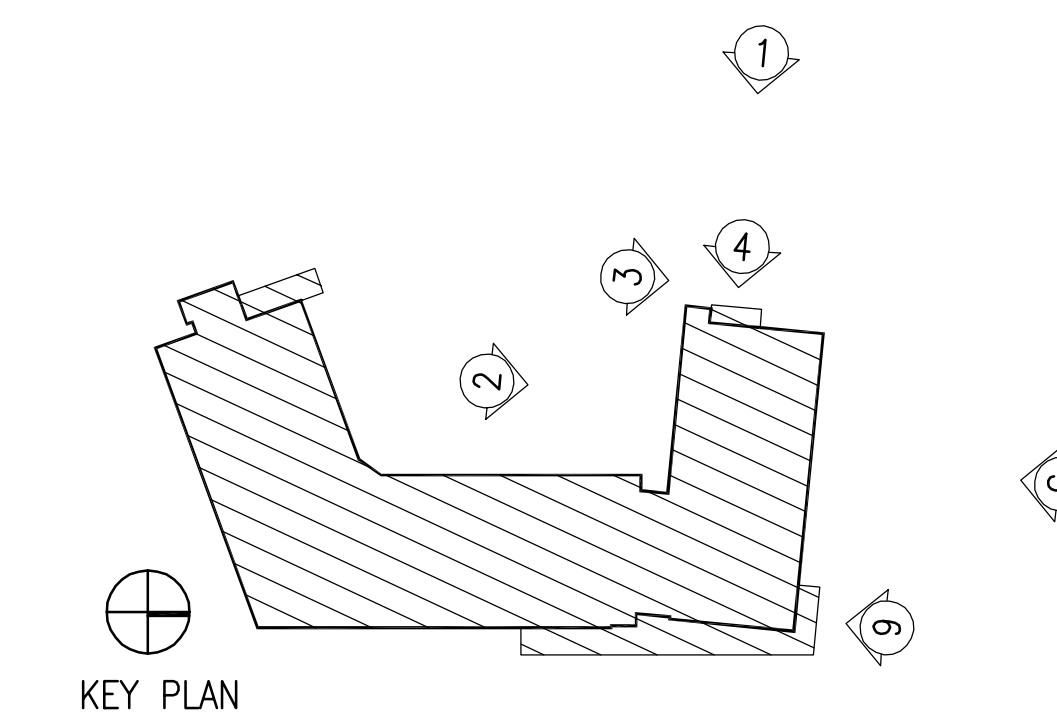
3 SOUTH COURTYARD ELEVATION
 A4.2 1/8" = 1'-0"



1 WEST EXTERIOR STAIR PARTIAL ELEVATION
 A4.2 1/8" = 1'-0"



2 CLU-LAM BRIDGE
 A4.2 1/8" = 1'-0"



KEY PLAN