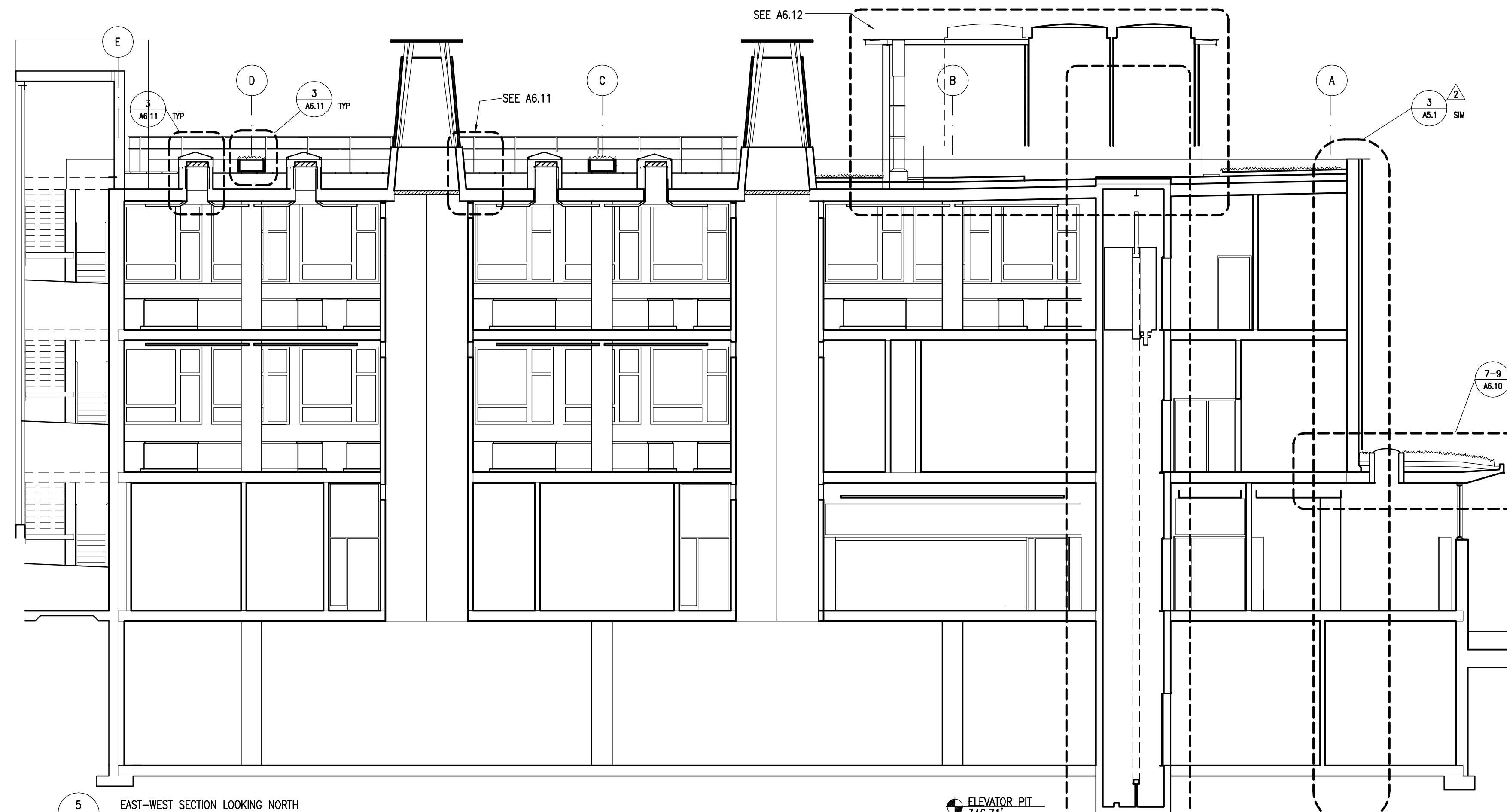
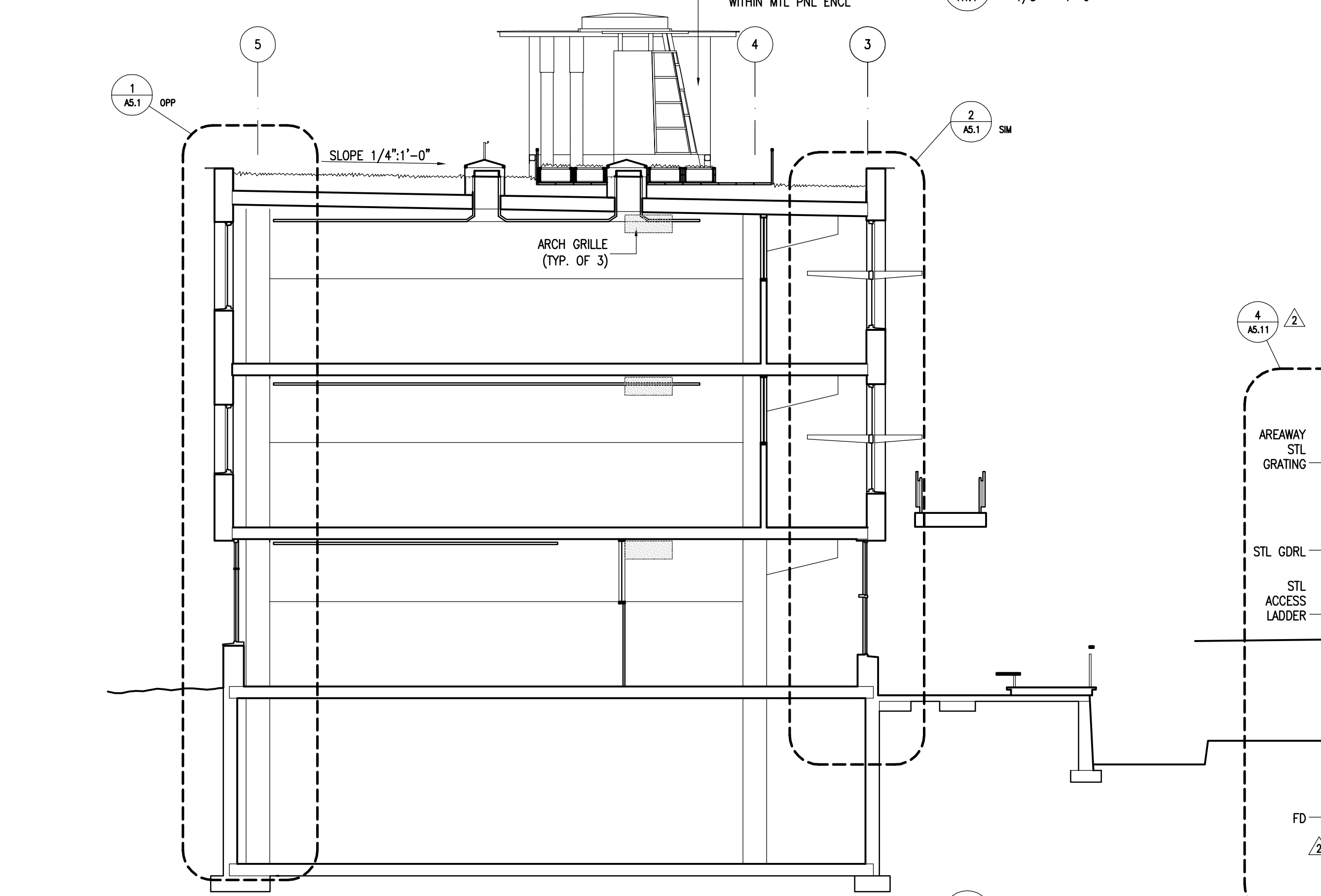


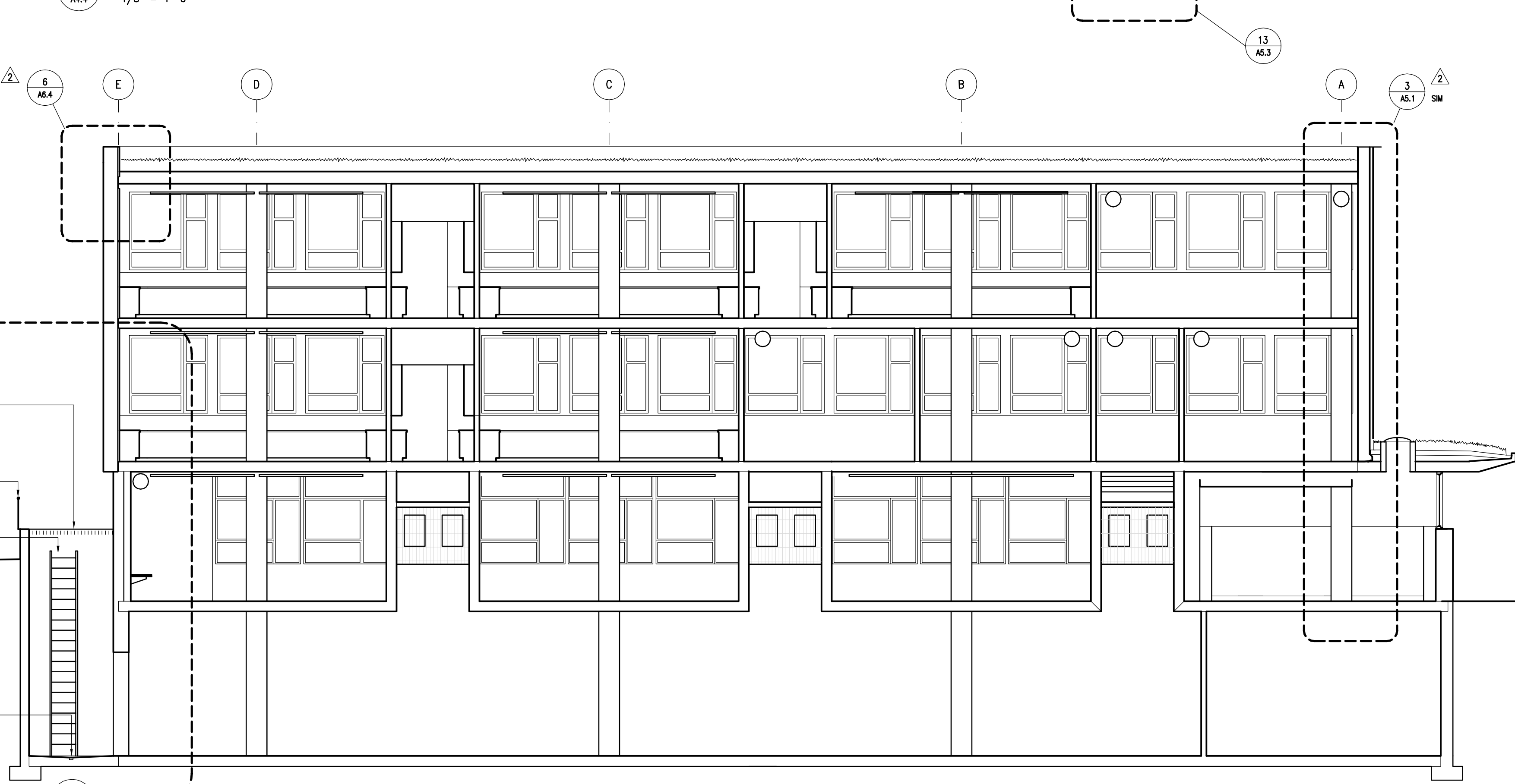
6 NORTH-SOUTH SECTION LOOKING EAST
1/8" = 1'-0"



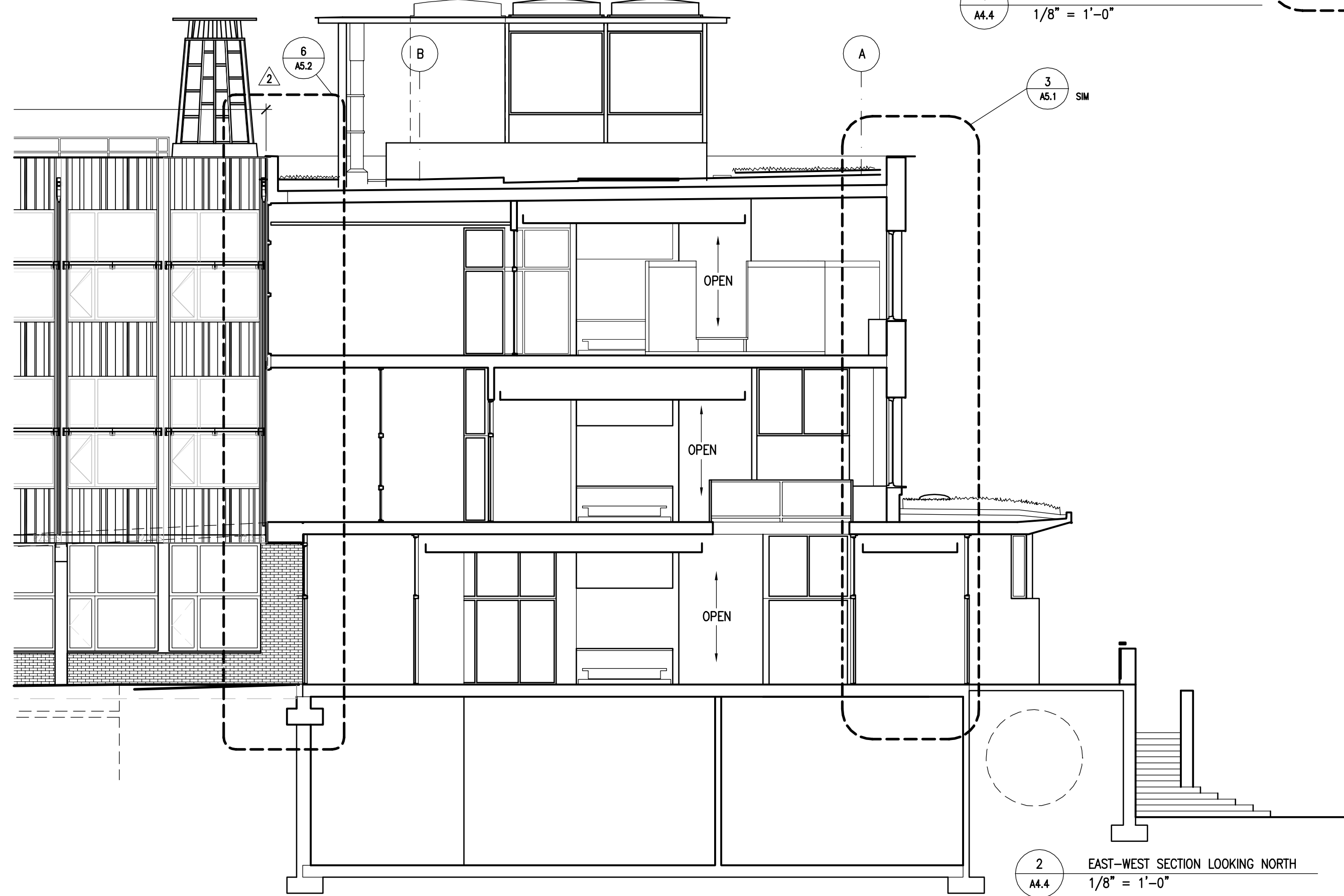
5 EAST-WEST SECTION LOOKING NORTH
1/8" = 1'-0"



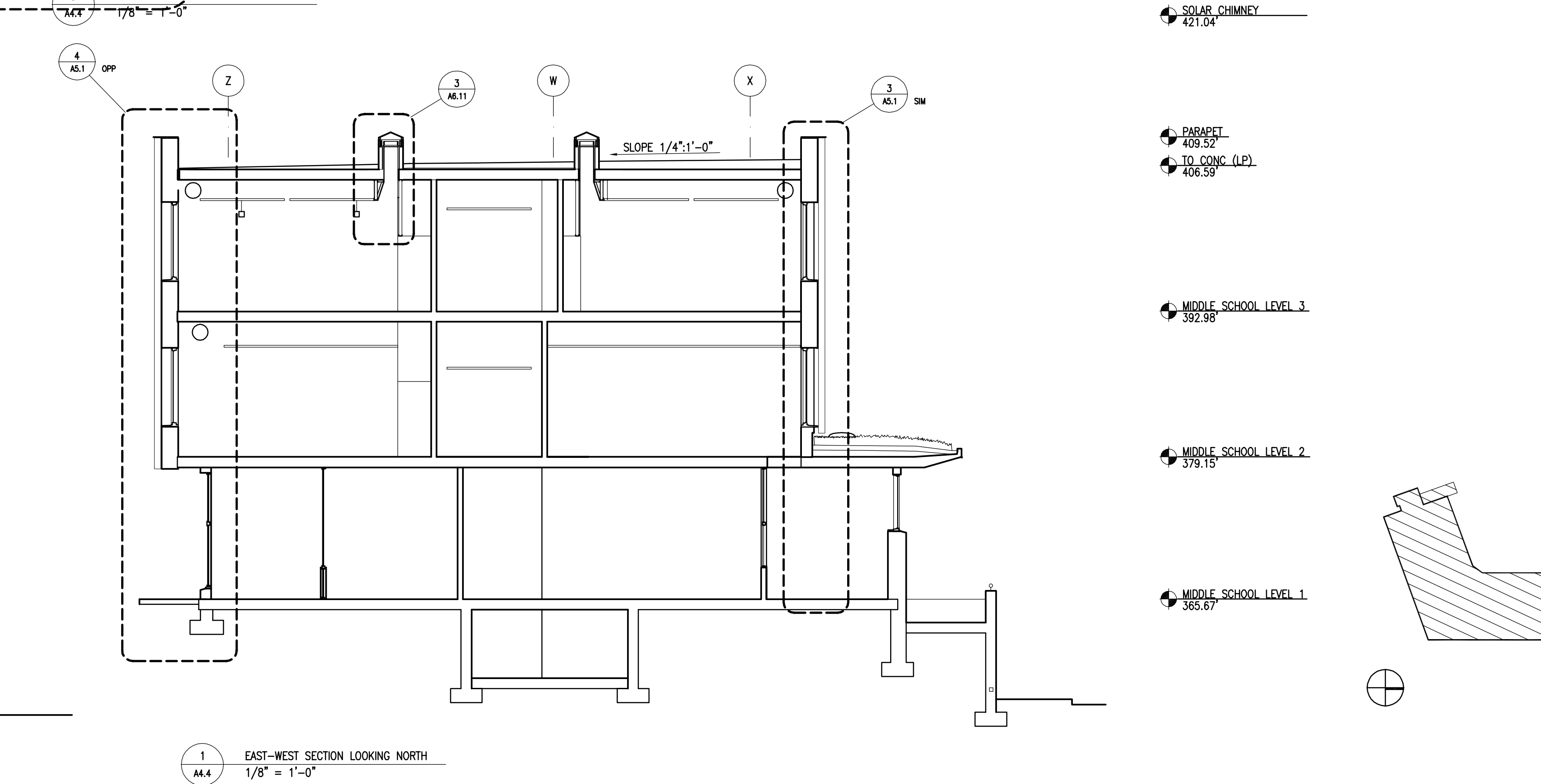
4 NORTH-SOUTH SECTION LOOKING EAST
1/8" = 1'-0"



3 EAST-WEST SECTION LOOKING NORTH
1/8" = 1'-0"



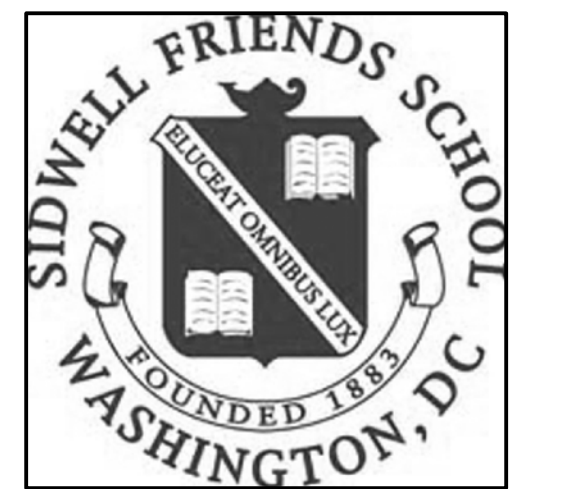
2 EAST-WEST SECTION LOOKING NORTH
1/8" = 1'-0"



1 EAST-WEST SECTION LOOKING NORTH
1/8" = 1'-0"

- ARCHITECT
KieranTimberlake Associates LLP
420 NORTH 20TH STREET
PHILADELPHIA, PA 19130
PHONE: 215-922-6600
FAX: 215-922-4680
EMAIL: kta@kierantimberlake.com
- OWNER'S REPRESENTATIVE
JFW PROJECT MANAGEMENT
17630 Club House Road Suite 203
Montgomery Village, MD 20886
PHONE: 301-330-3220
FAX: 301-330-3487
- STRUCTURAL ENGINEER
CVM ENGINEERS
65 OLD ENGINE SCHOOL ROAD
WAYNE, PA 19087
PHONE: 610-989-3800
FAX: 610-989-3677
- MEP ENGINEER
BRUCE BROOKS & ASSOCIATES
2209 Chestnut St
Philadelphia, PA 19130
PHONE: 215-569-0400
FAX: 215-569-2664
- LANDSCAPE ARCHITECT
ANDROPOGON ASSOCIATES, LTD
10 SHURLS LANE
PHILADELPHIA, PA 19127
PHONE: 215-487-0700
FAX: 215-483-7220
- CIVIL ENGINEER
VIKA, INC.
8180 Greensboro Drive Suite 200
McLean, VA 22102
PHONE: 703-442-7800
FAX: 703-761-2787
- LIGHTING CONSULTANT
SEAN O'CONNOR ASSOCIATES
211 NORTH 13TH STREET
PHILADELPHIA, PA 19107
PHONE: 215-988-9200
FAX: 215-988-9008
- LIGHTING CONSULTANT
BENYA LIGHTING DESIGN
1797 SW MCEWAN AVENUE, SUITE 2208
TIGARD, OR 97224
PHONE: 503-718-5483
FAX: 503-718-5485
- WASTEWATER CONSULTANT
NATURAL SYSTEMS INTERNATIONAL
3600 CERRILLOS ROAD, SUITE 1102
SANTE FE, NM 87507
PHONE: 505-988-7453
FAX: 505-988-3720

- LEVEL MARKERS:
SOLAR CHIMNEY 421.04
PARAPET 409.52
TO CONC. (LP) 406.59
TO CONC. (HP) 407.69
MIDDLE SCHOOL LEVEL 3 392.98
MIDDLE SCHOOL LEVEL 2 379.15
MIDDLE SCHOOL LEVEL 1 365.67
MIDDLE SCHOOL BASEMENT 350.67



SIDWELL FRIENDS SCHOOL
BETHESDA, MARYLAND
WASHINGTON, DC

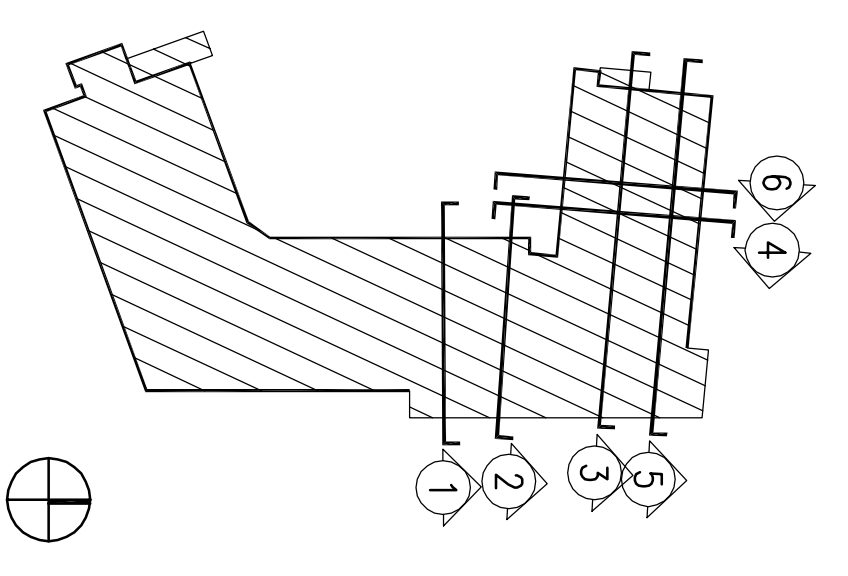
MIDDLE SCHOOL

KTA PROJECT NO. 694

BUILDING SECTIONS

SCALE: 1/8" = 1'-0"
DRAWN BY: IK, JG
CHECKED BY: SR
CAD FILE: 694_A4.4.dwg
DATE: 01 JUNE 2007

REVISIONS	DATE	DESCRIPTION
2	29 AUG 05	REPA5
2	07 SEP 05	REPA7
2	07 SEP 05	AS#2
	05 OCT 05	ISSUED FOR CONSTRUCTION



A4.4
RECORD SET